

Appendix A

Meeting Notifications

audition for all-region contest

Eighteen students from Wallace Middle School's Ranger Band qualified to audition for All-Region Band, with nine of those taking chairs at that level. The Rangers had 29 chairs in the All-District Band. One member, Skyler Johnson, earned Region Orchestra honors. All Region honorees included Payton Rodriguez, Gabriela Vences-Garcia, Kelly Vasquez, Jack Denning, Aidan Frohock, Luke Sherman, Erekan Cancino-Cox, James Ochoa-King, and Skyler Johnson. All-District honorees included Viviana Villalobos, Jasmine Salinas, Allison Neer, Jenna Creek, Carly Reyes, Lucas Holloway, Esperanza Zuniga, Nayelli Lopez, Darrin Guth, Mitchell Machuca, Lizbeth Romo, Daniel Torres, Colter Callahan, Derek Cancino, Julia Nino, Madison Gonzales, Carlos Sanchez-Garcia, Hailee Garrett, Samuel Glover and Austin Hallmark.



PHOTO BY JIM CULLEN

PEC shows support for Hays CISD Ed Foundation

Hays CISD Education Foundation Board members were appreciative of a \$2,000 donation from PEC recently. Celeste Mikeska, representing PEC, presented Foundation President Rob Dahse and a contingent of Foundation Board members with the check, which came from funds from PEC's Bright Lights Bright Minds Community Support Program and the CoBank

JOIN US

FM150
 CHARACTER PLAN
PUBLIC MEETING

Tuesday, December 13, 2016 from 6 - 8 p.m.

Presentation at 6:15 p.m.

**Dripping Springs High School - Cafeteria
 940 US-290, Dripping Springs, TX 78620**

Hays County is moving forward with the next phase of the FM 150 West Character Plan. Please join us at a public meeting to review the concepts from the first phase, Features and Themes; learn about the next phase, the Character and Master Plan; share your input on different roadway and aesthetic features. If you are unable to attend all materials will be posted online and you may share input via email.

www.improvefm150.com – (512) 533-9100 ext 17

See all your local news online at

www.HaysFreePress.com

snagged the block and returned it for two points.

Dripping Springs led 6-2 at halftime.

The baseball-style score continued after Angleton tallied a fourth quarter field goal, which cut Drip-

to orchestrate a final drive to get back in the game. They almost let the chance slip away.

Facing 4th-down and 20 deep in Angleton territory, Johnson con-

equally as meaningful.

"What you call isn't as important as having 11 kids on the field that believe in each other, make plays and don't give up," he said.

Lagniappe

Continued from pg. 1

Christmas on Mercer

This annual event will feature an old-fashioned holiday celebration on Mercer Street from 10 a.m. to 5 p.m. Dec. 3 with live music and entertainment, arts and crafts booths, kids games and activities, a trackless train and pony rides, photos with Santa Claus and more. The annual Lighting of the Tree will be held at the Triangle at 6:15 p.m.

Christmas carolers representing local churches and schools will serenade with heart-warming, traditional Christmas Carols at the tree lighting ceremony.

Nar Anon Family Group

Dripping Springs Nar Anon Family Group will meet beginning Dec. 6, at the DS United Methodist Church on Ranch Road 12 in the annex build-

ing behind the church every Tuesday from 6-7 p.m. All newcomers are welcome.

Sights and Sounds

Enjoy four full evenings of holiday festivities at San Marcos Plaza Park Nov. 30-Dec. 3. Highlights include carnival rides, arts and crafts, pictures with Santa, local school performances and a food court.



Tuesday, December 13, 2016 from 6 - 8 p.m.

Presentation at 6:15 p.m.

**Dripping Springs High School - Cafeteria
940 US-290, Dripping Springs, TX 78620**

Hays County is moving forward with the next phase of the FM 150 West Character Plan. Please join us at a public meeting to review the concepts from the first phase, Features and Themes; learn about the next phase, the Character and Master Plan; share your input on different roadway and aesthetic features. If you are unable to attend all materials will be posted online and you may share input via email.

www.improvefm150.com – (512) 533-9100 ext 17

t city project manager

is to help with the 2014 Bond projects, but also to better navigate the future of Capital Improvement Projects (CIP) in Buda.

"Because of the growth Buda is experiencing, many CIP projects will be coming down the pipeline, so having a project manager will help to keep everything cohesive," Cresswell said.

Cresswell also said he is very used to working within tight deadlines and budgets, but he gets the job done within the parameters he is given.

"My goal is to work diligently to see the projects are completed on time and stay within the approved budgets," Cresswell said in a statement.

Cresswell's position was approved within the fiscal year 2017 budget, ac-

cording to the release. He added that he hoped the position would ensure the future of Buda's growth remains true to the vision of Buda residents.

Cresswell said his position as project manager would in no way interfere with the duties of the members of the Sustainability Commission in its mission to make Buda's buildings and projects more green.

"The sustainability commission is very important to the residents of Buda and their future and I don't foresee any conflicting issues with adding sustainable elements to project budgets," Cresswell said.

Buda's hire of a project manager falls in line with Kyle, which hired its project manager in 2014.

Jo Ann Garcia, Kyle project manager, was hired by the city in 2014. Garcia's hire came as the city's 2013 Road Bond projects were getting underway.

Garcia told the *Hays Free Press* in an emailed interview that she primarily works with the Road Bond projects, but that she is involved in every phase of the project development.

Garcia said having an in-house project manager helps decrease a city's cost to outsource work to other companies and can help save a city and its citizens some money.

"One of the job functions of the project manager is to act in the City's behalf to account for services performed," Garcia said.

JOIN US



PUBLIC MEETING

Tuesday, December 13, 2016 from 6 - 8 p.m.

Presentation at 6:15 p.m.

**Dripping Springs High School - Cafeteria
940 US-290, Dripping Springs, TX 78620**

Hays County is moving forward with the next phase of the FM 150 West Character Plan. Please join us at a public meeting to review the concepts from the first phase, Features and Themes; learn about the next phase, the Character and Master Plan; share your input on different roadway and aesthetic features. If you are unable to attend all materials will be posted online and you may share input via email.

www.improvefm150.com – (512) 533-9100 ext 17

News
naysireepress.com.

HOT committee.

ing, businesses and orga-

were Photography Work-

place.

regarding projects.

Stanberry Commercial
REALTORS®
www.stanberry.com

Ben Sorrell
512.422.4376
bsorrell@stanberry.com

COMMERCIAL FOR SALE

- | | |
|--|-----------|
| 1.756 Ac CORNER LOT, 246' Hwy frontage on Hwy 290E, Dripping Springs, \$3.69/sf, PRICE REDUCED | \$279,500 |
| 1.1 Ac OFFICE or RETAIL PAD SITE next to Lehman HS in Kyle, ALL UTILITIES -- READY TO BUILD | \$295,000 |
| 3.38 Ac Lot on Springs Lane, Dripping Springs, \$2.06/sf, level lot ... easy to develop | \$295,000 |

RIVERFRONT FOR SALE

- | | |
|--|-----------|
| 6.00 Ac, Comfort, TX, distant views, overlooks the Guadalupe River NEW PRICE | \$225,000 |
|--|-----------|

LAND FOR LEASE

- | | |
|--|------------|
| 3.0 Ac commercial frontage on Hwy 290 for lease or joint venture | NEGOTIABLE |
|--|------------|

CLIENT NEEDS

- | | |
|--|------------|
| Commercial income property WIMBERLEY OR DRIPPING SPRINGS AREA | \$300,000 |
| Approx 2,500sf Retail lease space in the Dripping Springs vicinity | Negotiable |

Dripping Springs/Wimberley
512.894.3488

Comfort, Texas
830.995.2953

JOIN US

FM150
CHARACTER PLAN
PUBLIC MEETING

Tuesday, December 13, 2016 from 6 - 8 p.m.

Presentation at 6:15 p.m.

Dripping Springs High School - Cafeteria
940 US-290, Dripping Springs, TX 78620

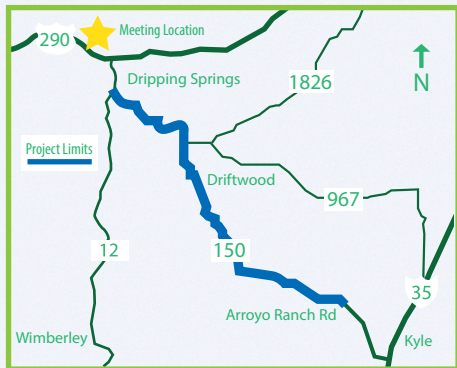
Hays County is moving forward with the next phase of the FM 150 West Character Plan. Please join us at a public meeting to review the concepts from the first phase, Features and Themes; learn about the next phase, the Character and Master Plan; share your input on different roadway and aesthetic features. If you are unable to attend all materials will be posted online and you may share input via email.

www.improvefm150.com – (512) 533-9100 ext 17

P. O. Box 5459
Austin, TX 78763



Postcard Notification



Visit the website for more information:

www.improvefm150.com

Send your email
to sign up for project updates:

characterplan@improvefm150.com

FM 150 West Character Plan – Public Meeting



Hays County is moving forward with the next phase of the FM 150 West Character Plan. Please join us at a public meeting to:

- Review the concepts from the first phase, Features and Themes
- Learn about the next phase, the Character and Master Plan
- Share your input on different roadway and aesthetic features

If you are unable to attend, all materials will be posted online and you may share input via email.

Tuesday, December 13, 2016 from 6 – 8 p.m.

Presentation at 6:15 p.m.

Dripping Springs High School – Cafeteria

940 US-290, Dripping Springs, TX 78620

www.improvefm150.com - (512) 533-9100 ext 17

Appendix B

Meeting Exhibits and Materials

Hays County FM 150 West Character Plan Nature and Character Master Plan

**Public Meeting #1
Tuesday, December 13, 2016
Dripping Springs High School**

WELCOME & INTRODUCTIONS

- Hays County Precinct 4 Commissioner Ray Whisenant
- Hays County Precinct 3 Commissioner Will Conley
- Project Team
- Citizens Advisory Panel

WELCOME & INTRODUCTIONS

Citizens Advisory Panel

- Mr. Don Bosse
- Mr. David Braun
- Mr. Casey Cutler
- Mr. Dennis Dement
- Mr. Shelby Eckols
- Mr. Mark Oechsner
- Mr. Bob Parks
- Mr. Mike Pruitt
- Judge Bob Shannon

AGENDA

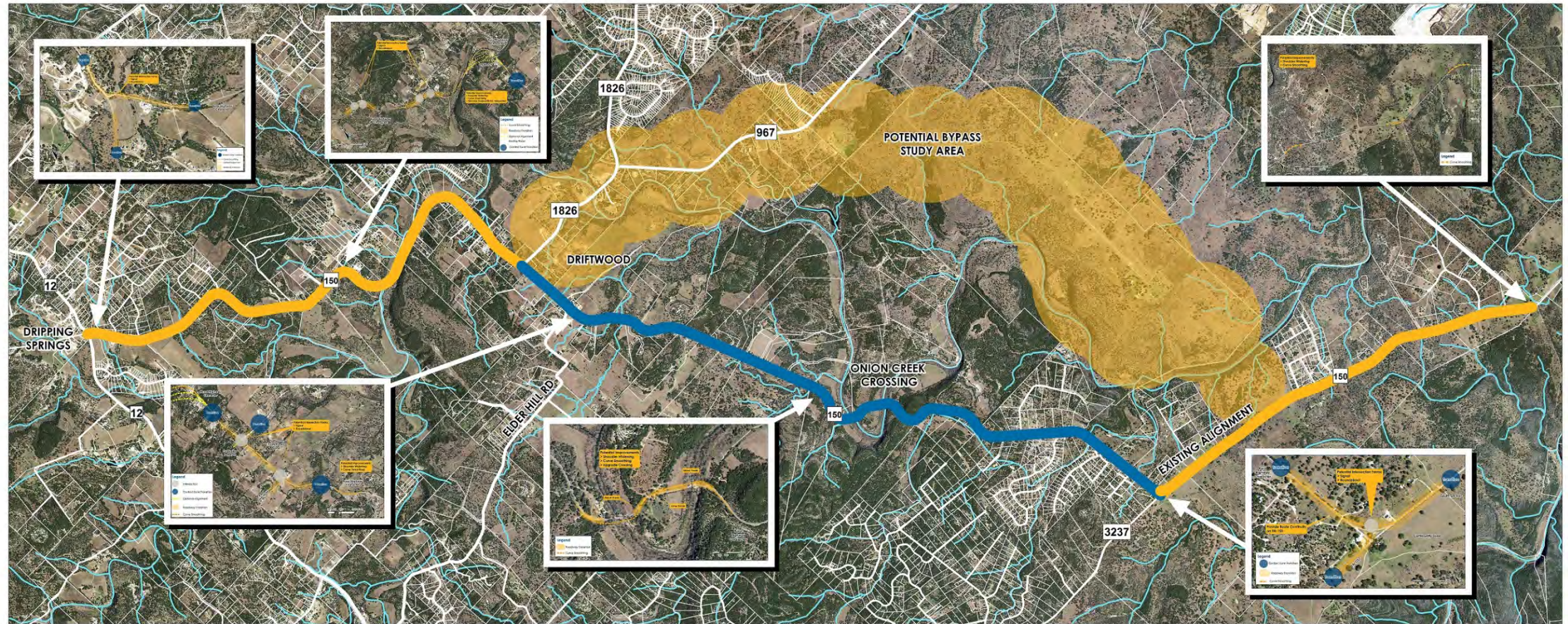
1. Review Past Project Activities
2. Nature and Character Master Plan Scope
3. Project Schedule
4. Current Activities
5. Crash Data Update
6. Planning Exercise Overview
7. Questions
8. Conduct Planning Exercise

BACKGROUND

- Corridor Features and Themes Report complete
- Developed with extensive community engagement
- Documents existing conditions on corridor and key characteristics
- Outlines future planning framework and continuum of improvements



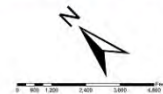
STUDY AREAS



**FM 150 Nature & Character Master Plan
Corridor Concepts**

Legend

- North
- Middle
- South
- Roads
- Bypass
- Property Line
- River



Date: 11/17/2016

**K·FRIESE
+ ASSOCIATES**
PUBLIC PROJECT ENGINEERING

NATURE AND CHARACTER MASTER PLAN SCOPE

- Embarking on Nature and Character Plan
- Will result in **Corridor Master Plan**
 - Define concepts to schematic level
 - Estimate costs for design and construction
 - Develop relative order for implementation
 - Define the “cookbook” of concepts: scopes for additional study, costs of studies, process, timing
- Tonight is first of many opportunities for input!

NATURE AND CHARACTER MASTER PLAN SCOPE

Preliminary Schematics

- FM 150 from RM 12 south to FM 1826
- FM 150 from FM 3237 south to the vicinity of Arroyo Ranch Road
- Potential Bypass Route to the east of FM 150

Guidance












- FM 150 from FM 1826 south to FM 3237

OPPORTUNITIES FOR INVOLVEMENT

Three Public Meetings

1. Review the Features and Themes Study, expectations for the second phase of work, and community input
2. Gather community input on preliminary schematics for FM 150 from FM 3237 south to the vicinity of Arroyo Ranch Road, and for the Potential Bypass Route.
3. Gather community input on preliminary schematic for FM 150 from FM 1826 to RM 12

PROJECT SCHEDULE

	2016				2017											
Month	Sept	Oct	Nov	Dec	Jan	Feb	Mar	Apr	May	Jun	Jul	Aug	Sep	Oct	Nov	Dec
Project kick-off																
Focus: Arroyo Ranch to FM 3237 and proposed bypass route																
Focus: FM 1826 to RR 12																
Project wrap-up and report																



Public Meeting



CAP Meeting

PROJECT SCHEDULE

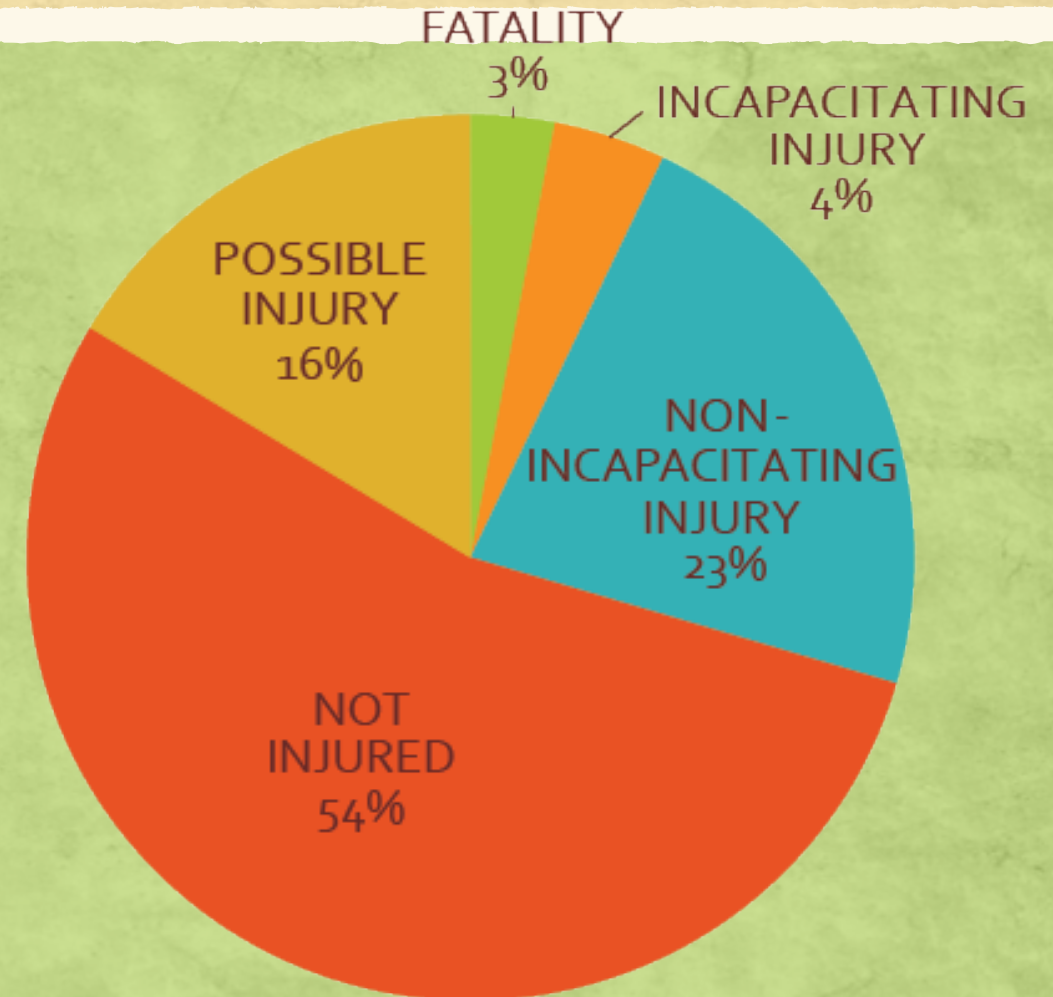
Date	Meeting Type	Location
Tuesday, November 15, 2016	Citizens Advisory Panel	Dripping Springs High School Cafeteria
Tuesday, December 13, 2016	Public Meeting	Dripping Springs High School Cafeteria
Thursday, January 19, 2017	Citizens Advisory Panel	Dripping Springs High School Lecture Hall
Thursday, February 23, 2017	Citizens Advisory Panel	Dripping Springs High School Lecture Hall
Thursday, March 23, 2017	Citizens Advisory Panel	Dripping Springs High School Lecture Hall
Thursday, April 27, 2017	Public Meeting	Dripping Springs High School Cafeteria
May 2017	No Meeting	No Meeting
Thursday, June 15, 2017	Citizens Advisory Panel	Dripping Springs High School Lecture Hall
Thursday, July 20, 2017	Citizens Advisory Panel	Dripping Springs High School Lecture Hall
Thursday, August 10, 2017	Citizens Advisory Panel	Dripping Springs High School Lecture Hall
Thursday, September 21, 2017	Public Meeting	Dripping Springs High School Cafeteria
Thursday, October 19, 2017	Citizens Advisory Panel	Dripping Springs High School Lecture Hall

CURRENT ACTIVITIES

- Updating traffic counts
- Updating and reviewing crash data (initial summary provided)
- Updating human and natural environmental constraint data
- Working on base engineering
- Preparing for the January CAP meeting
 - Beginning to look at FM 3237 to Arroyo Ranch section
 - Developing potential Bypass Study Route

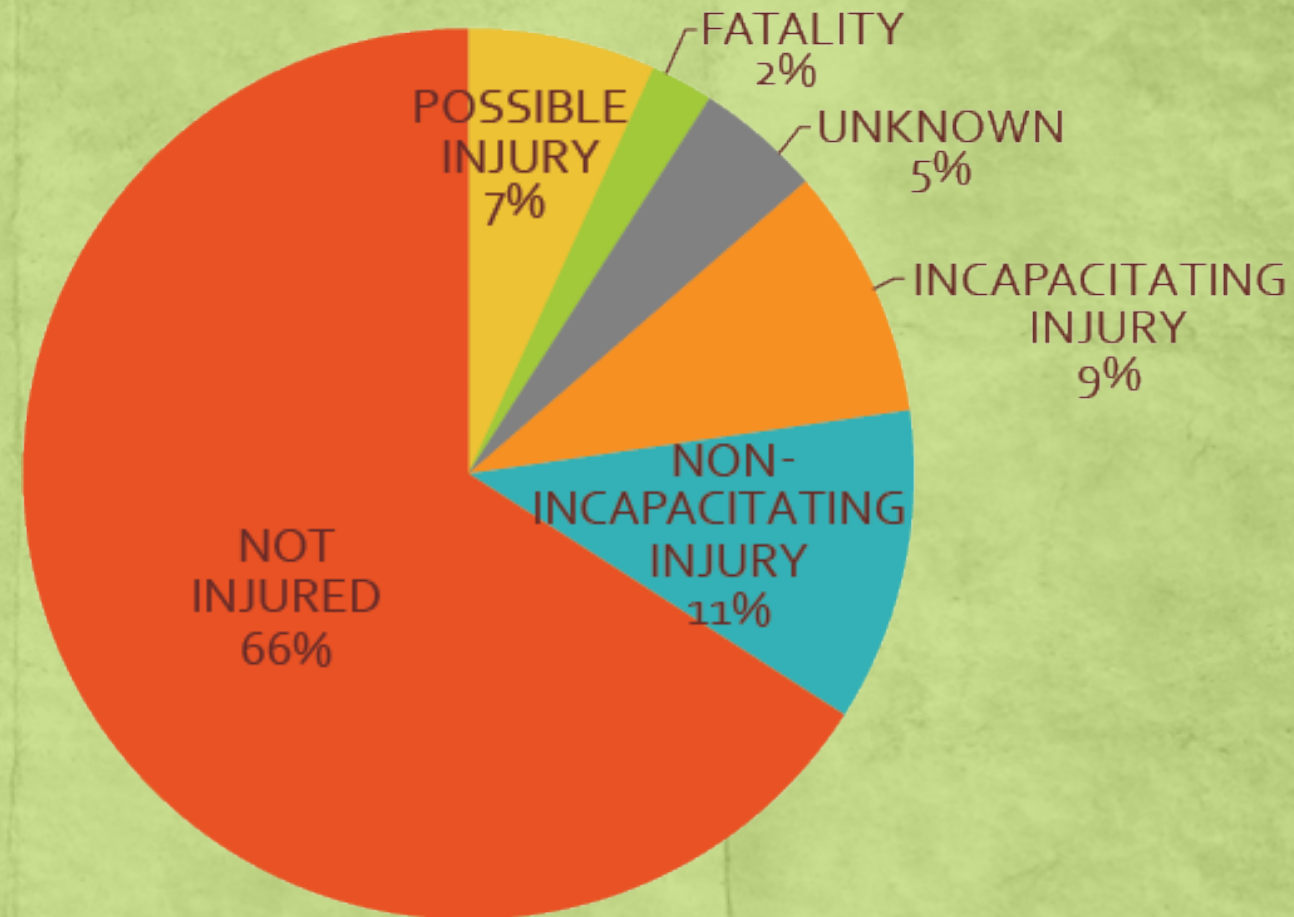
CRASH DATA UPDATE

- First phase reviewed data from Jan. 2010 to June 2014 (4.5 years)
- 98 crashes assessed
- Majority of crashes involved no or possible injuries
- 3 fatal crashes

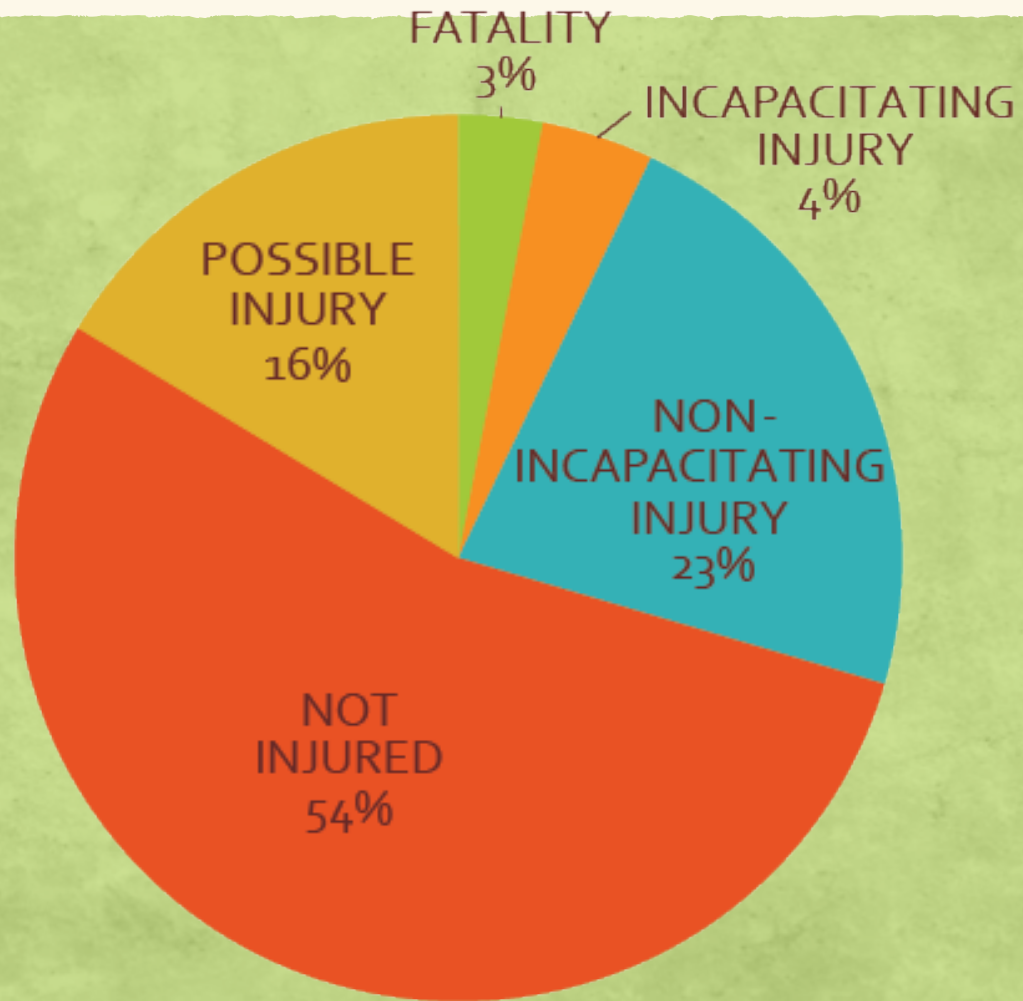


CRASH DATA UPDATE

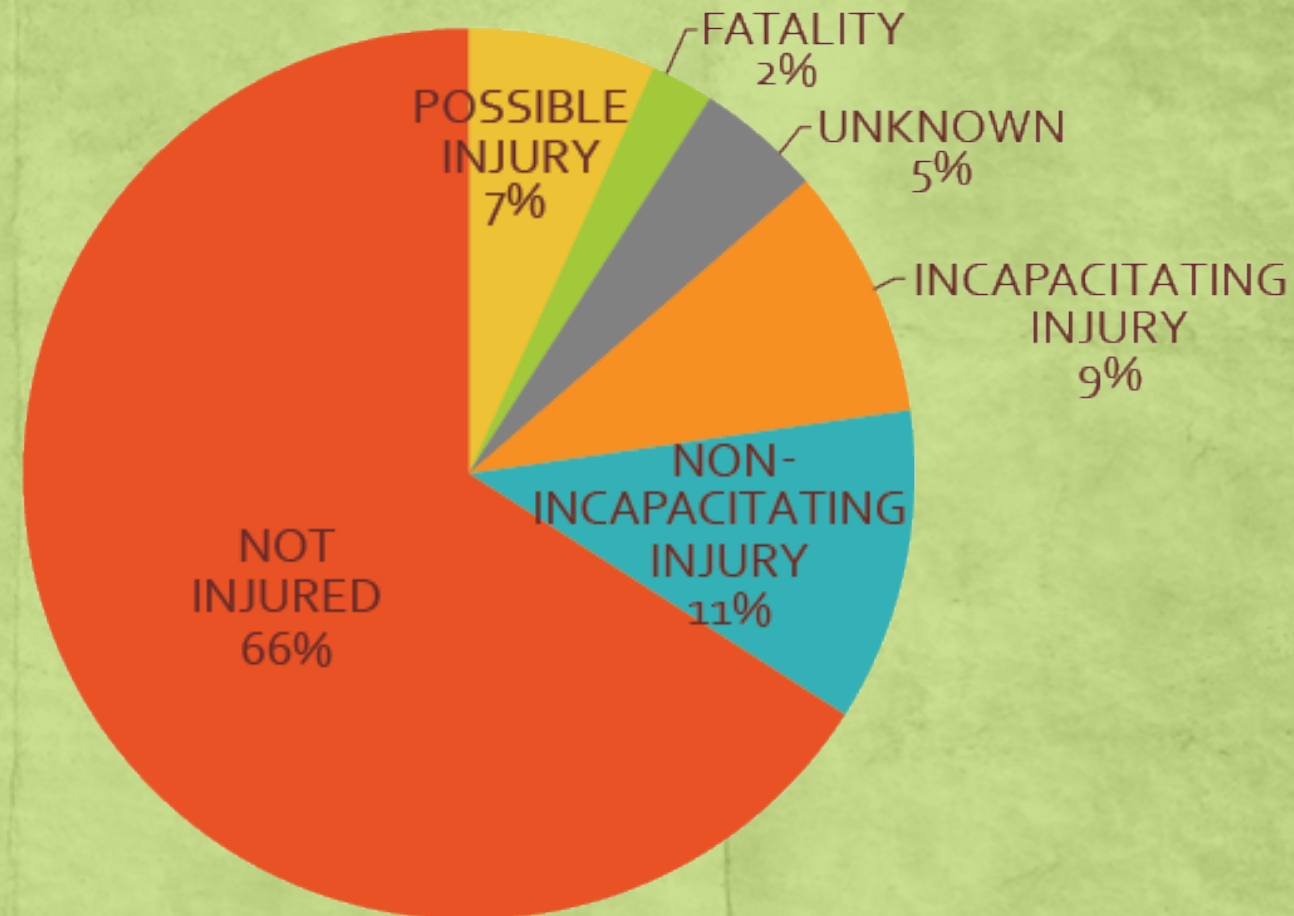
- Reviewed July 2014 through Aug. 2016 data (2.25 years)
- 44 crashes assessed
- Similar number of crashes *per year*
- Again, majority of crashes involved no or possible injuries
- 1 fatal crash near double low water crossings



CRASH DATA UPDATE



Jan. 2010 to June 2014



July 2014 through Aug. 2016

CRASH DATA UPDATE

- Significant portion of fixed object crashes (34% - previously 50%)
- Majority of crashes non-intersection related (68% - previously 76%)
- Most crashes occurred when the weather was clear
- Similar conclusions: potential influence of narrow shoulders, isolated or tight curves, non-recoverable sections of roadway

CRASH DATA UPDATE



PLANNING EXERCISE

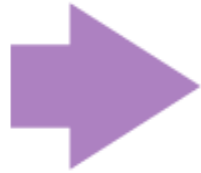
- Looking for your feedback on potential features
- Following slides walk through potential improvements identified in previous phase of project, as well as current considerations
- Help us determine the types of roadway features to consider in each section

PHASED IMPROVEMENTS

- Developed by section and time-frame

Near-Term Improvements

Existing alignment
Two-lane safety cross section
Intersection enhancements



Mid-Term Improvements

Spot treatments to curves
Transition to long-term layout



Long-Term Improvements

Future alignment
Future cross sections

PHASED IMPROVEMENTS EXAMPLE

- Example of safety section (near-term)

SAFETY SECTION



PHASED IMPROVEMENTS EXAMPLE

- Intersection enhancements (near- to mid-term)
 - Improving delineation
 - Considering alternative traffic control
 - Enhancing sight-distance
 - Intersection improvements (e.g. turn lanes)

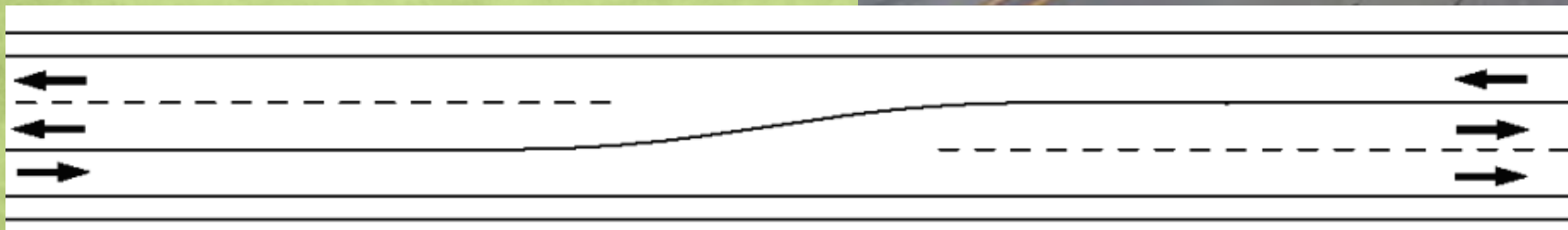
PHASED IMPROVEMENTS EXAMPLE

- Curve treatments (mid-term)
- Future cross-section (long-term)



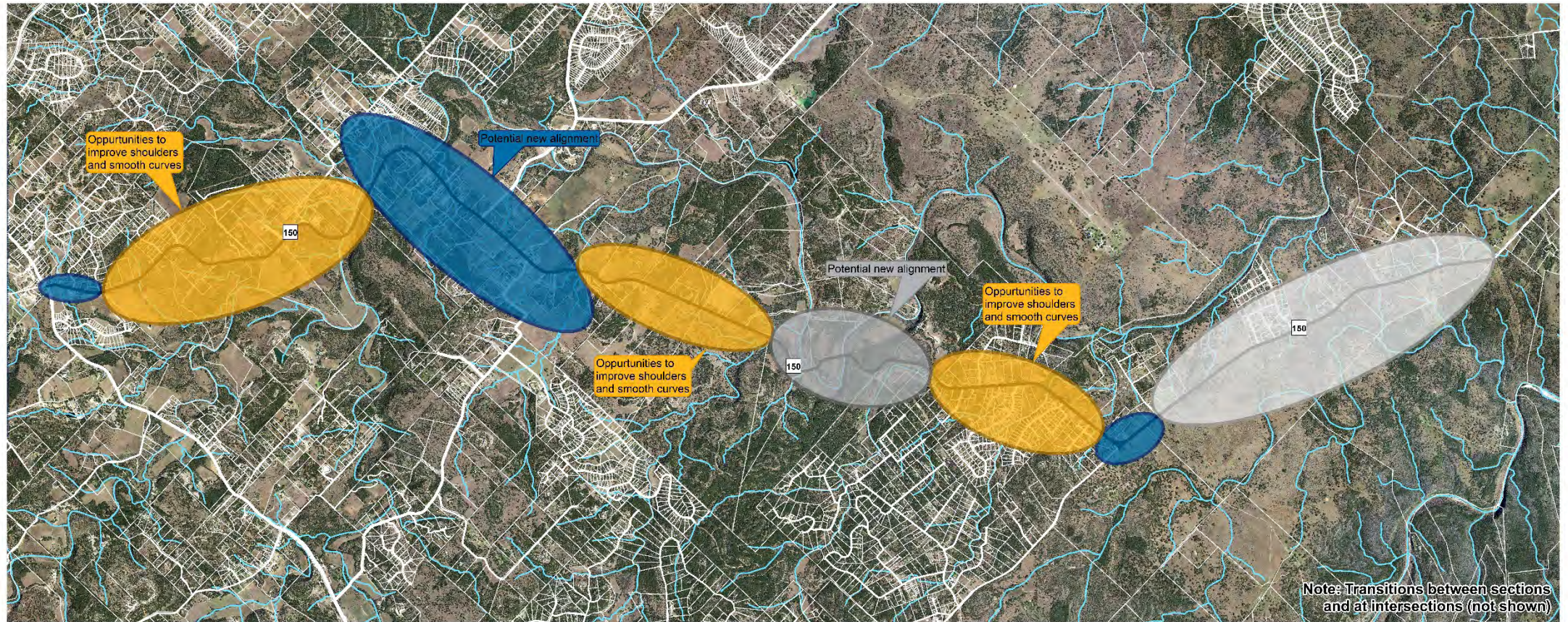
WHAT IS A SUPER TWO?

- “a periodic passing lane is added to a two-lane rural highway to allow passing of slower vehicles and the dispersal of traffic platoons” (TxDOT)

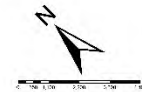
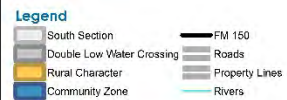


Source: Google Maps
Gonzales, TX

CORRIDOR BY CONTEXT ZONE



FM 150 Nature & Character Master Plan Context Zones



Date: 12/2/2016

SEGMENTS WITH RURAL CHARACTER CONTEXT

- Beauty of rural, undeveloped nature along corridor
- Few driveway access points
- Abundance of vegetation up to roadway
- Desire to preserve nature and character



SEGMENTS WITH RURAL CHARACTER CONTEXT

Considerations:

- Target speed
- Bicycle, pedestrian, equestrian accommodations
- Wayfinding signage
- Delineation



COMMUNITY ZONES

- Areas where the activities along the corridor change
- Greater access to destinations
- Speeds commensurate with the land uses
- Desire to set driver expectations appropriately



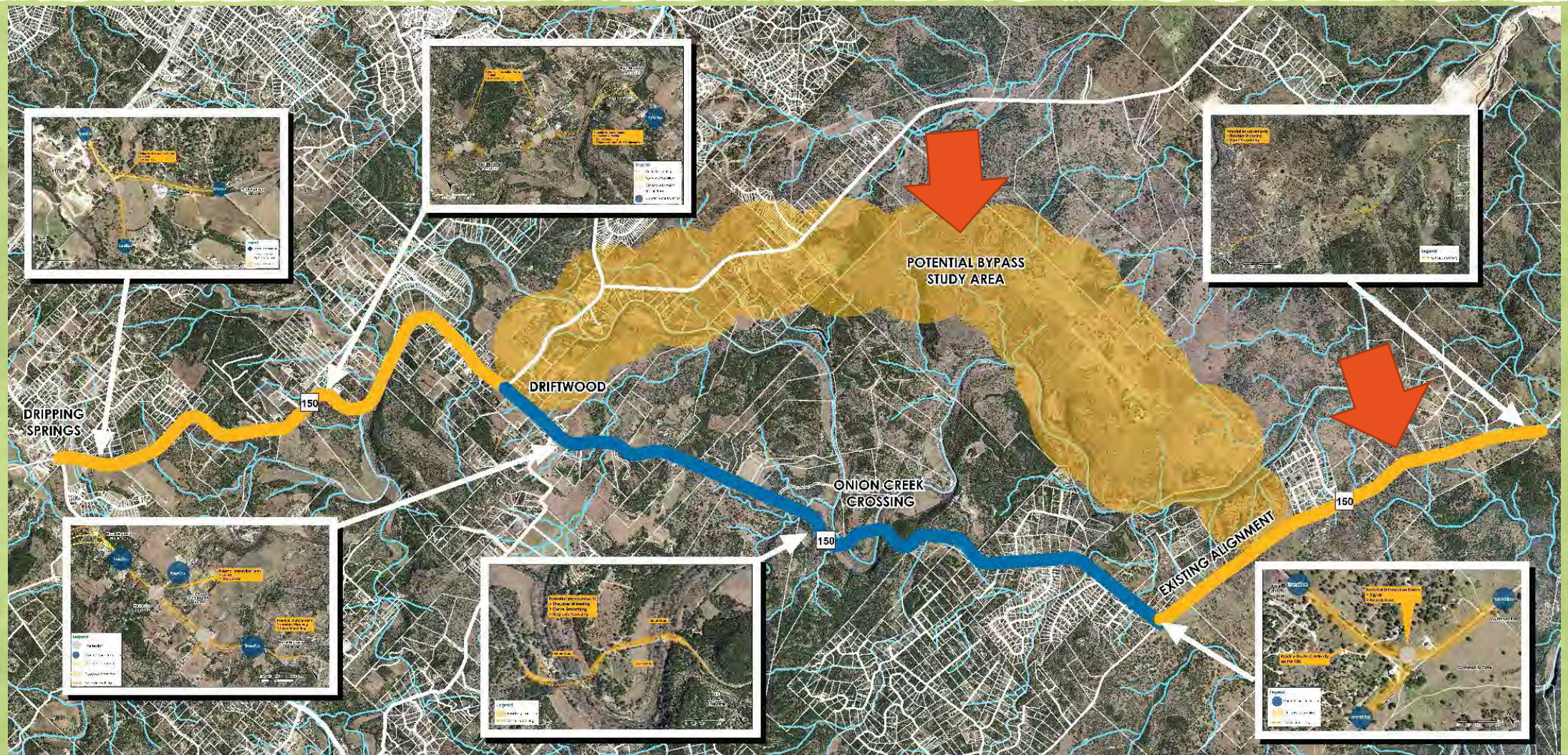
COMMUNITY ZONES

Considerations:

- Transition zones
- Gateway treatments
- Target speed
- Bicycle, pedestrian, equestrian accommodations
- Intersection forms
- Signage (wayfinding, historical, business)



CORRIDOR BY SECTION



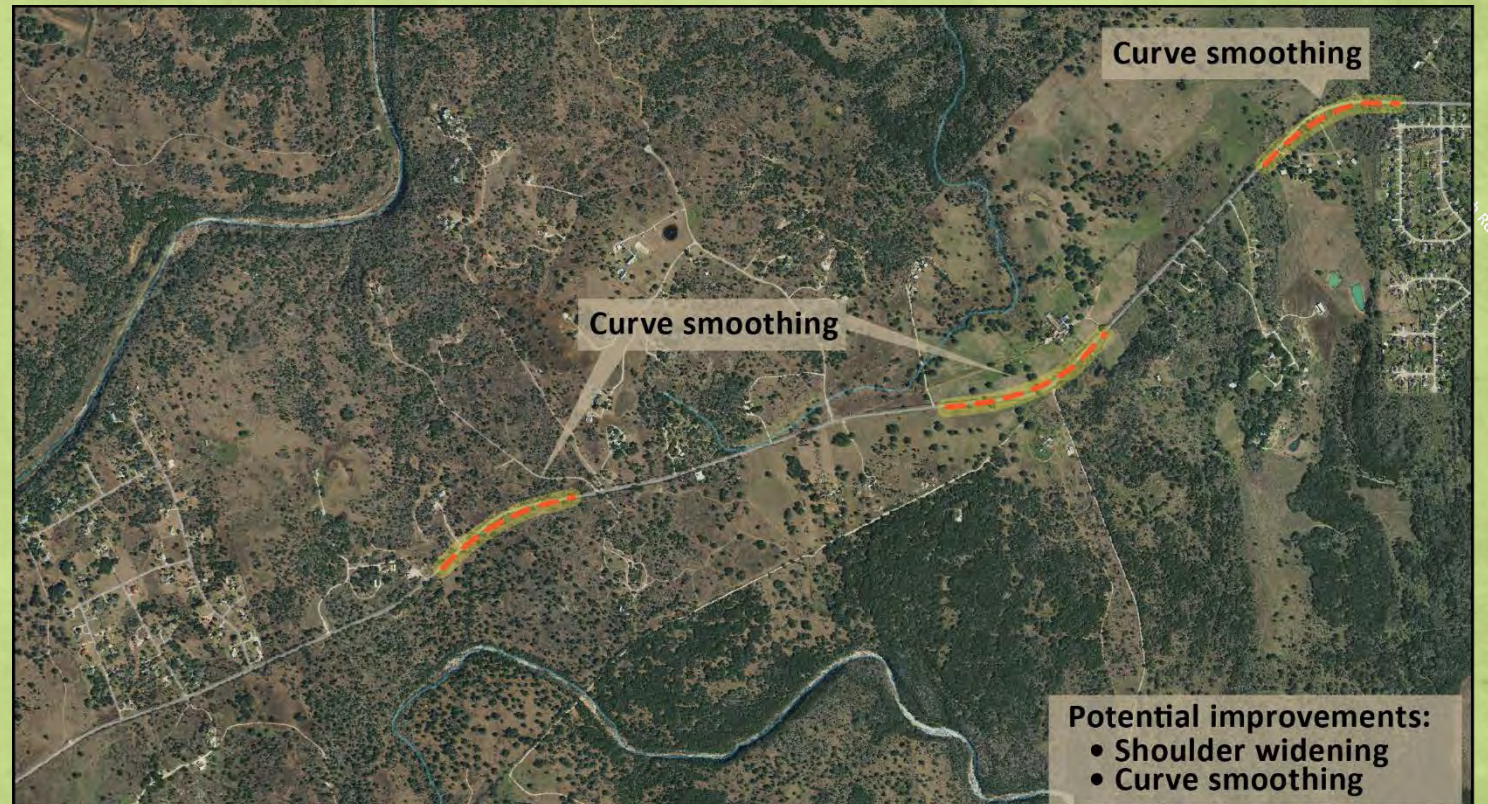
ARROYO RANCH TO FM 3237

Potential Improvements:

- Shoulder widening
- Curve smoothing
- Super-two section on ends of corridor
- Locate bypass connection

Considerations:

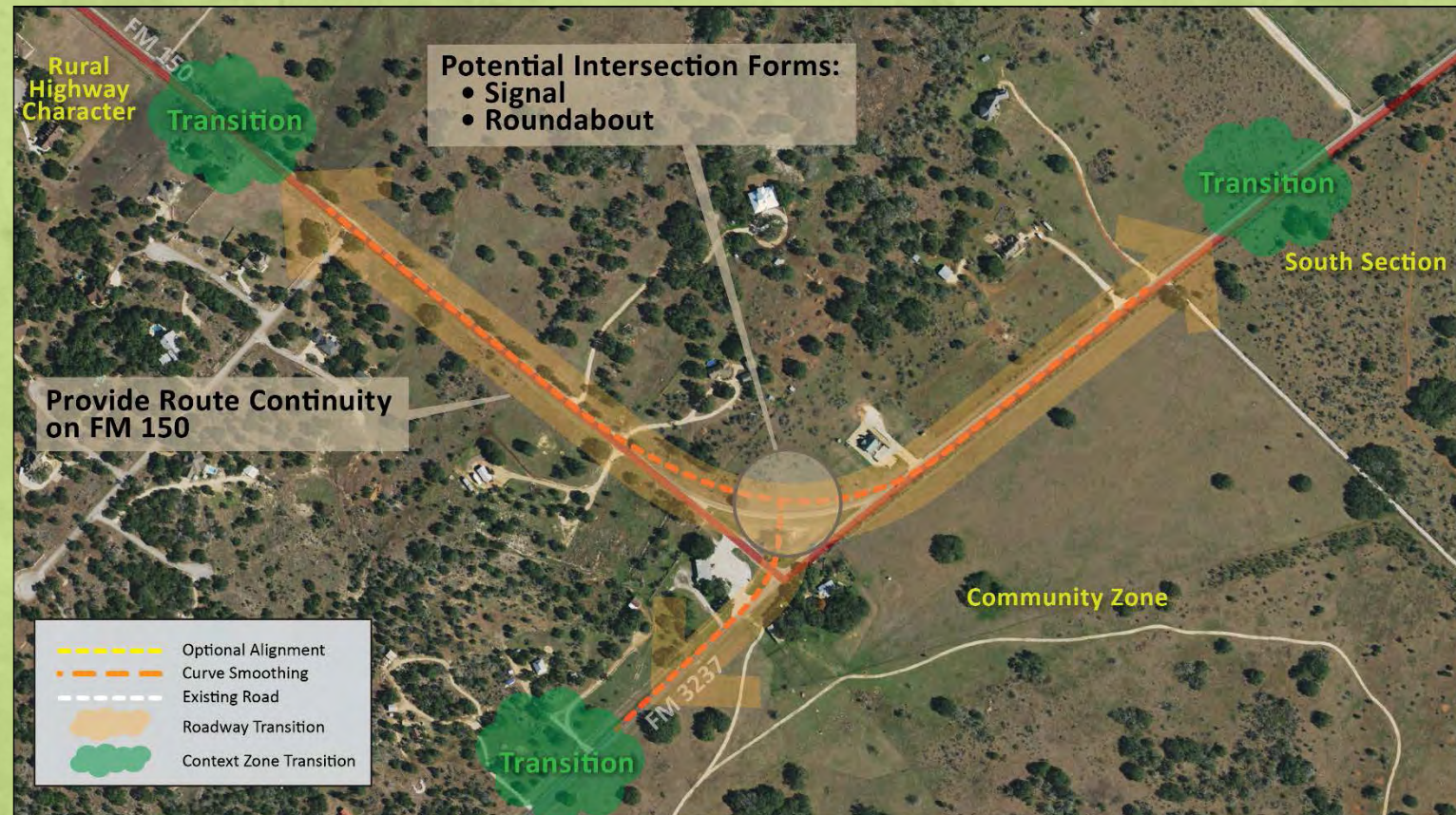
- Target speed
- Bicycle, pedestrian, equestrian accommodations
- Signage
- Delineation



ARROYO RANCH TO FM 3237

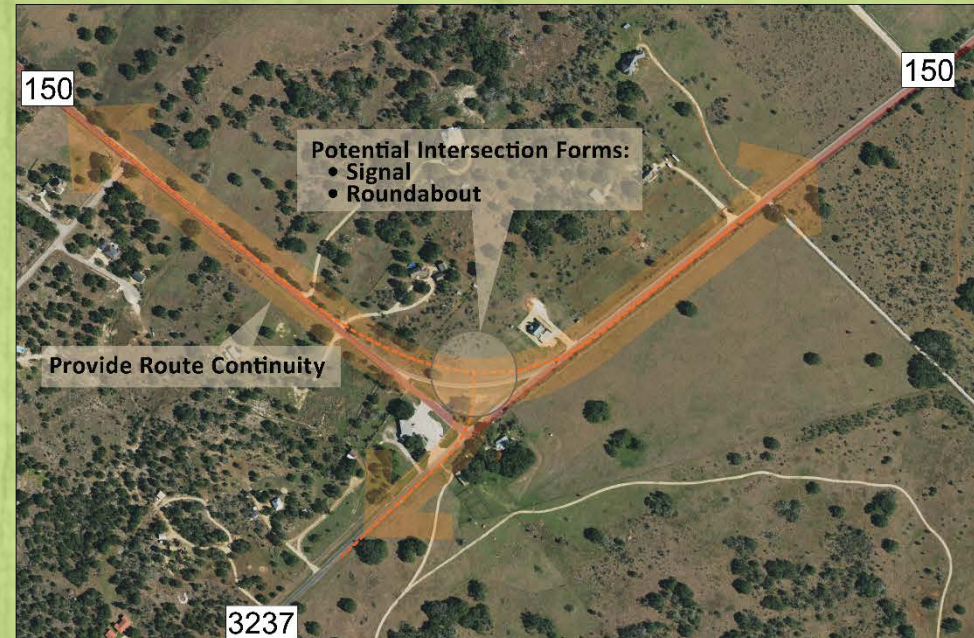
Considerations:

- Transition zones
- Gateway treatments
- Target speed
- Bicycle, pedestrian, equestrian accommodations
- Intersection forms and alignment
- Signage

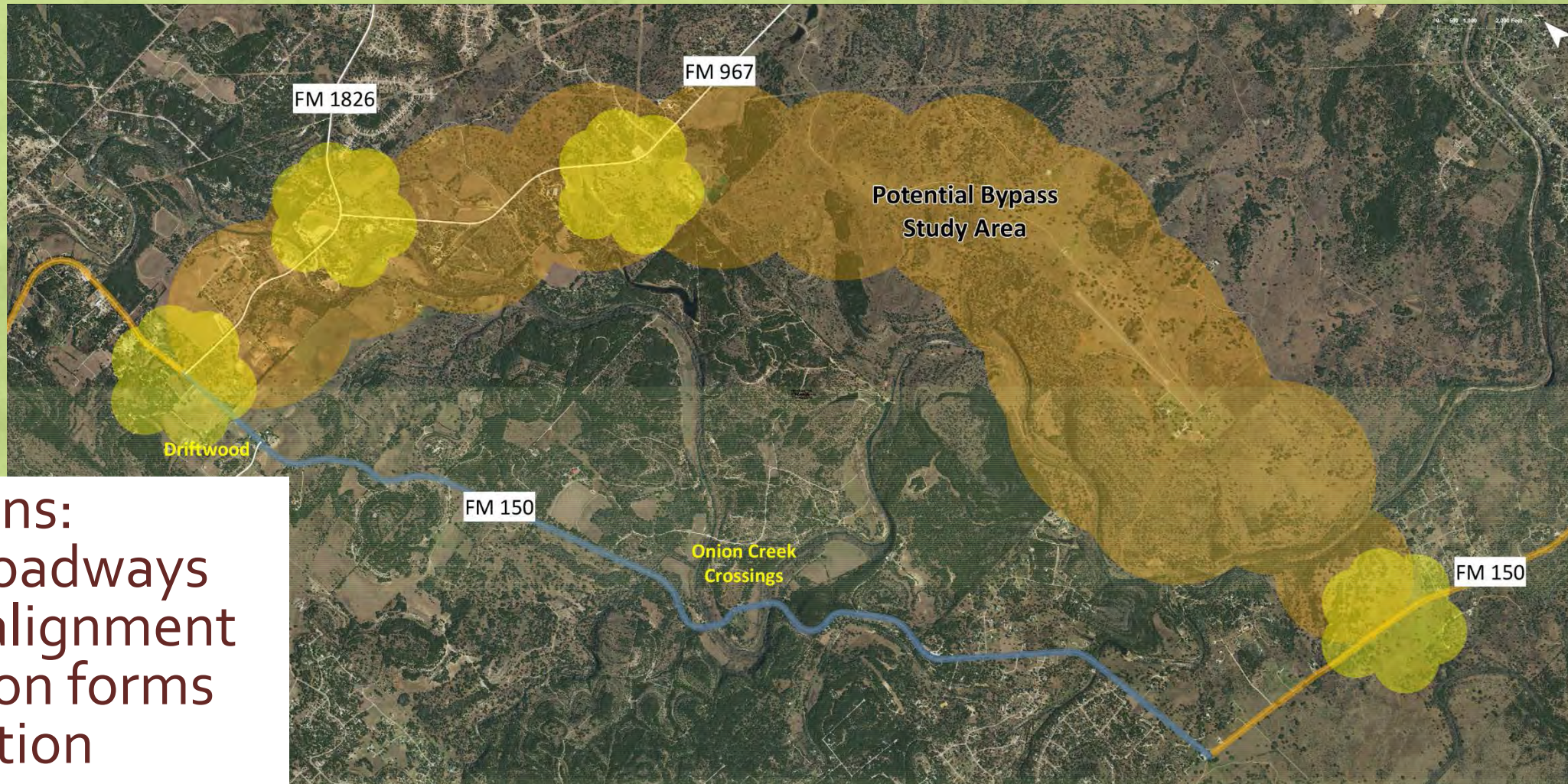


ARROYO RANCH TO FM 3237

- Intersection forms
 - Stop control
 - Traffic signal
 - Roundabout
 - Based on community input and warrants
- Alignment
 - FM 150 continuous route
 - Existing alignment
 - Consider bypass



BYPASS



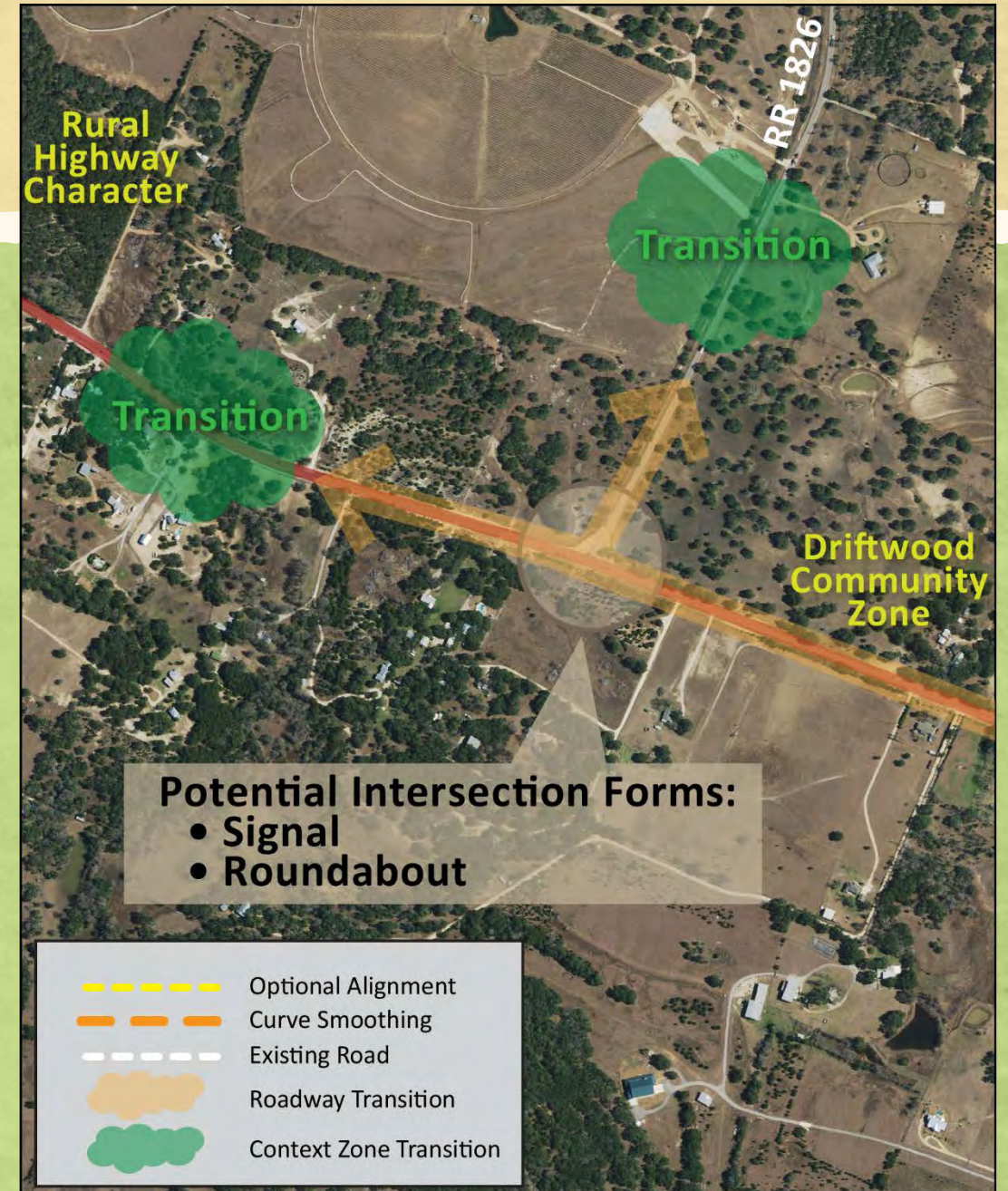
Considerations:

- Existing roadways and new alignment
- Intersection forms
- Cross-section

FM 1826 to RR 12

Considerations:

- Transition zones
- Gateway treatments
- Target speed
- Bicycle, pedestrian, equestrian accommodations
- Intersection forms
- Signage



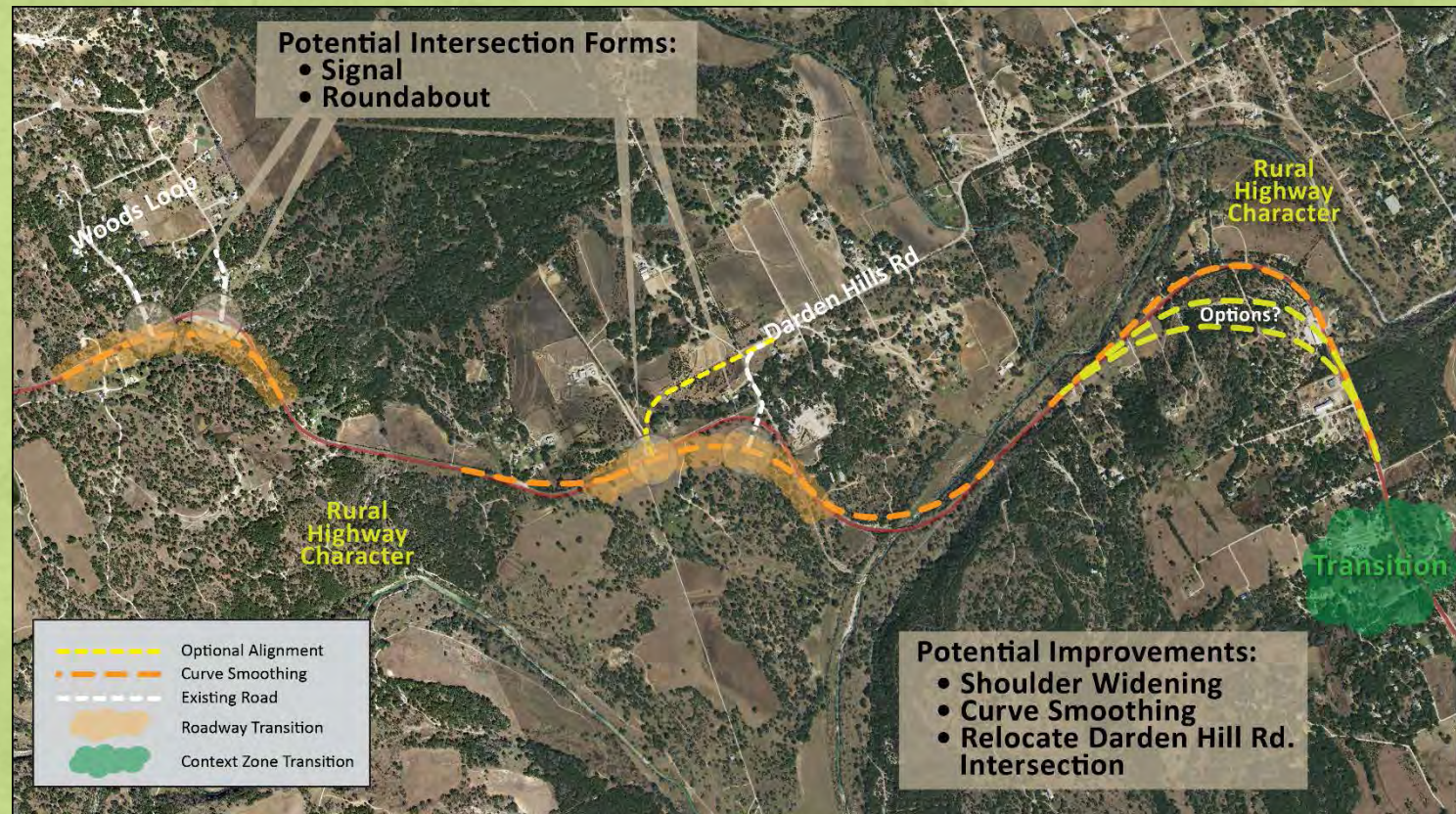
FM 1826 to RR 12

Potential Improvements:

- Shoulder widening
- Curve smoothing
- Super-two section on ends of corridor

Considerations:

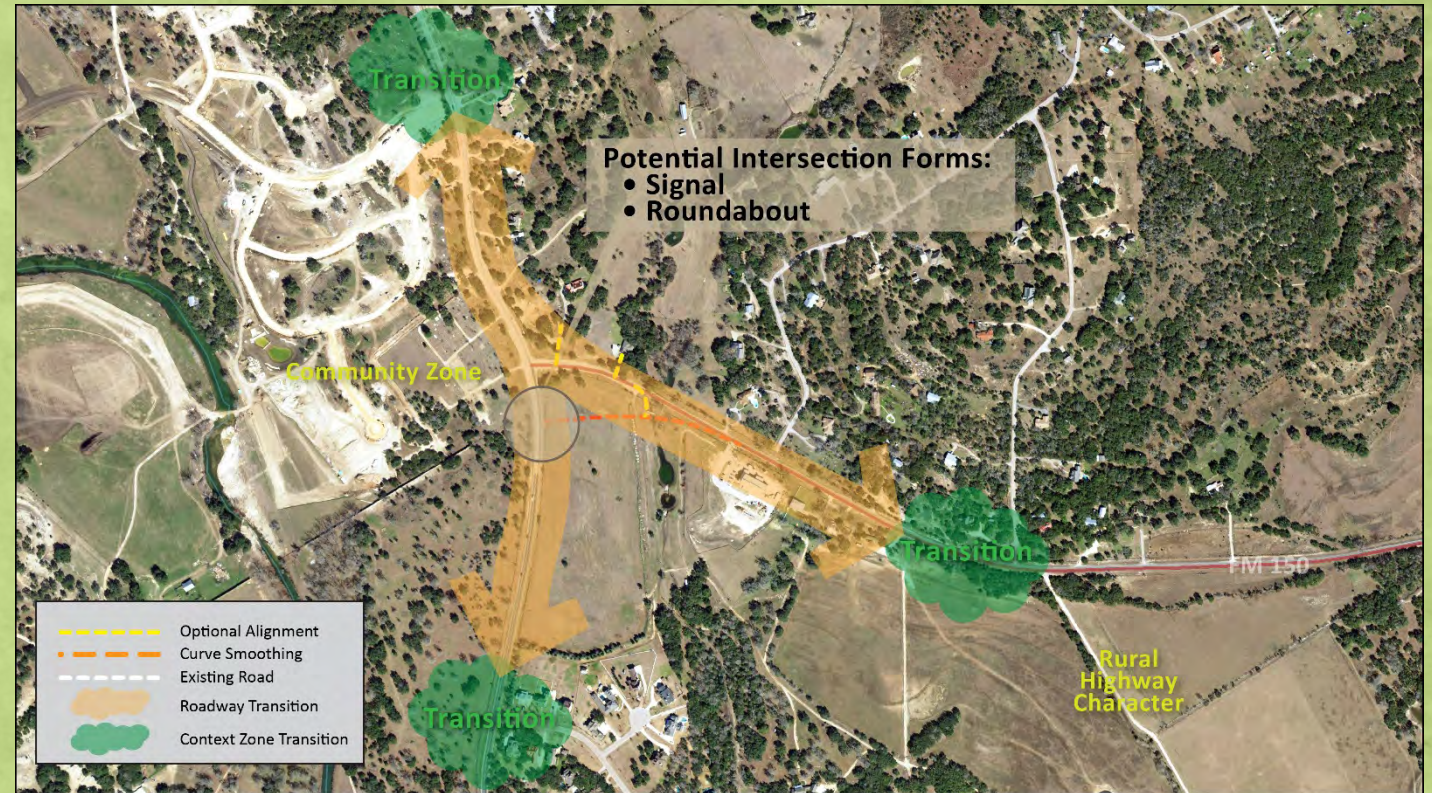
- Target speed
- Bicycle, pedestrian, equestrian accommodations
- Signage
- Delineation



FM 1826 to RR 12

Considerations:

- Transition zones
- Gateway treatments
- Target speed
- Bicycle, pedestrian, equestrian accommodations
- Intersection forms
- Signage



PLANNING EXERCISE

- Maps of corridor divided by segment
- Provide your input on considerations shown at each station



NEXT STEPS

- Review feedback received tonight
- Refine concepts for Arroyo Ranch to FM 3237 and proposed bypass route, considering:
 - Updated traffic counts and crash data
 - Updated human and natural environmental constraint data
 - Feedback from planning exercise
 - Refined base mapping
- Next public meeting: Thursday, April 27, 2017

QUESTIONS

Let's take 10-20 minutes for questions

STAYING IN TOUCH

For study information:

512-533-9100 Ext. 17

characterplan@improvefm150.com

Email updates: Email characterplan@improvefm150.com
with Email Updates in the subject line

Project website: www.improvefm150.com

Arroyo Ranch to FM 3237



FM 150

FM 150

Transition

Transition

Transition

FM 3237

Arroyo Ranch to FM 3237

➔ **Target speed:** what speed would you like to target on this segment?
Put dot by speed:

45 mph

50 mph

55 mph

Other?

➔ **Delineation:** where might delineation be helpful to indicate curves in the roadway or intersections?

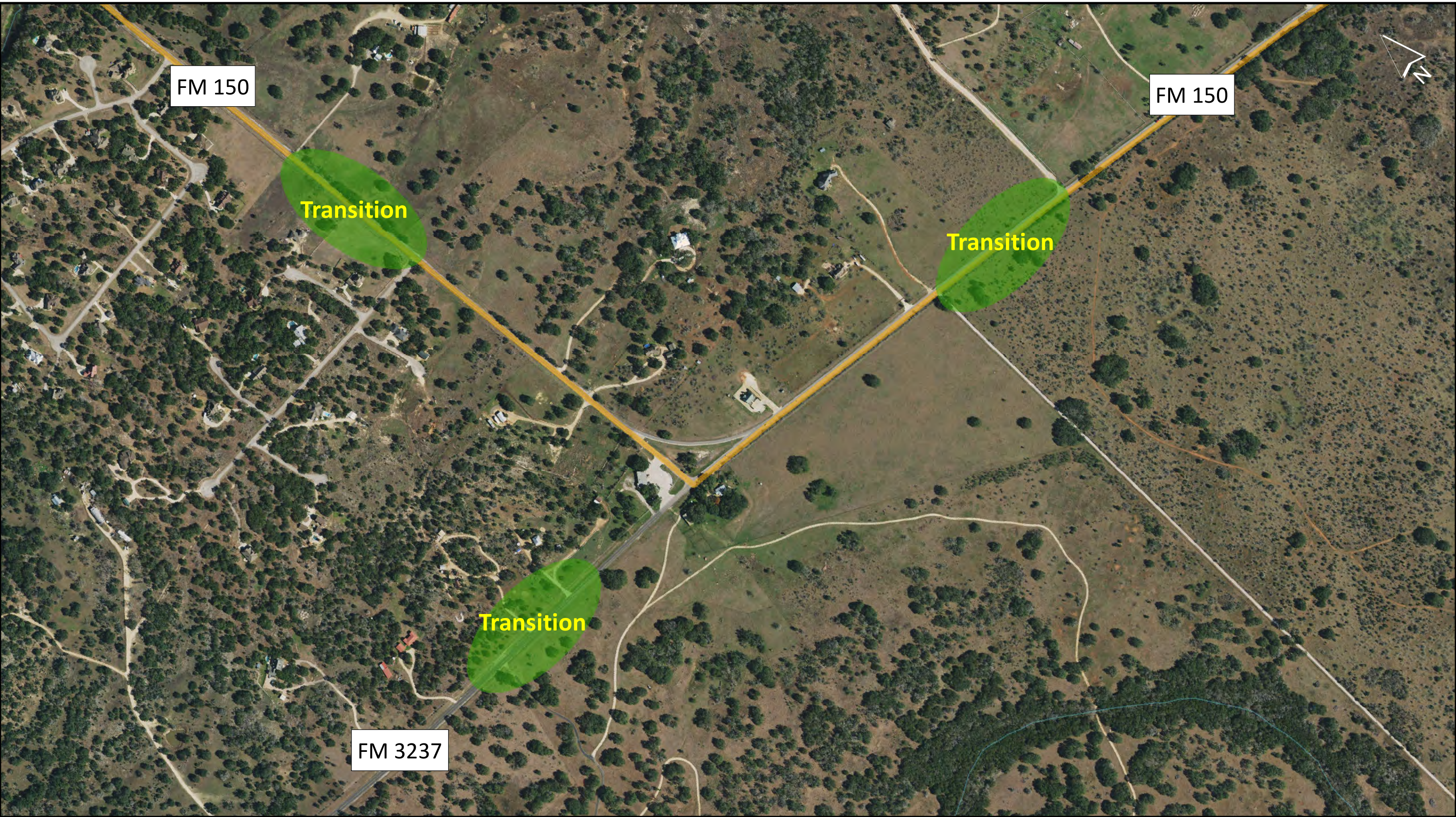


➔ **Bicycle, pedestrian, equestrian accommodations:** are these a priority along the segment? If so, would you prefer to see a wider paved shoulder or separated path?



➔ **Signage:** would you like to see historic, directional, or business signage? Where?





FM 150

FM 150

FM 3237

Transition

Transition

Transition

Arroyo Ranch to FM 3237 - Intersection of FM 3237

➡ **Target speed:** what speed would you like to target at the community zone?

Put dot by speed:

25 mph

30 mph

35 mph

45 mph

Other?

➡ **Gateway treatments:** what gateway treatments are you interested seeing?

Examples include signage, landscaping, change in cross-section to include median/curbing



➡ **Bicycle, pedestrian, equestrian accommodations:** are there desired crossing locations?

➡ **Signage:** would you like to see historic, directional, or business signage? Where?



Arroyo Ranch to FM 3237 - Intersection of FM 3237

- ➔ **Intersection form:** are you interested in stop control, a traffic signal or roundabout?

The traffic control is also influenced by traffic volumes and national warrants.

- ➔ **Intersection alignment:** are you interested in maintaining the turn on FM 150 or realigning the intersection?



Arroyo Ranch to FM 3237 Station

Arroyo Ranch to FM 3237

Target Speed

What speed would you like to target on this segment? Circle one: 45 mph, 50 mph, 55 mph, Other _____

Comments

Delineation

Where might delineation be helpful to indicate curves in the roadway or intersections?

Comments

Bicycle, Pedestrian, and Equestrian Accommodations

Are these a priority along the segment? If so, would you prefer a wider paved shoulder or a separated path?

Comments

Signage

Would you like to see historical, directional, or business signage? Where?

Comments

Arroyo Ranch to FM 3237 Station

Arroyo Ranch to FM 3237 – Intersection of FM 3237

Target Speed

What speed would you like to target at the community zone? 25 mph, 30 mph, 35 mph, 45 mph, Other

Comments

Gateway Treatments

What gateway treatments are you interested in seeing? (Examples include: signage, landscaping, change in cross-section to include median/curbing)

Comments

Bicycle, Pedestrian, and Equestrian Accommodations

Are there desired crossing locations?

Comments

Signage

Would you like to see historical, directional, or business signage? Where?

Comments

Arroyo Ranch to FM 3237 Station

Intersection of FM 3237

Are you interested in stop control, a traffic signal, or roundabout?

Comments

Are you interested in maintaining the turn on FM 150 or realigning the intersection?

Comments



Optional:

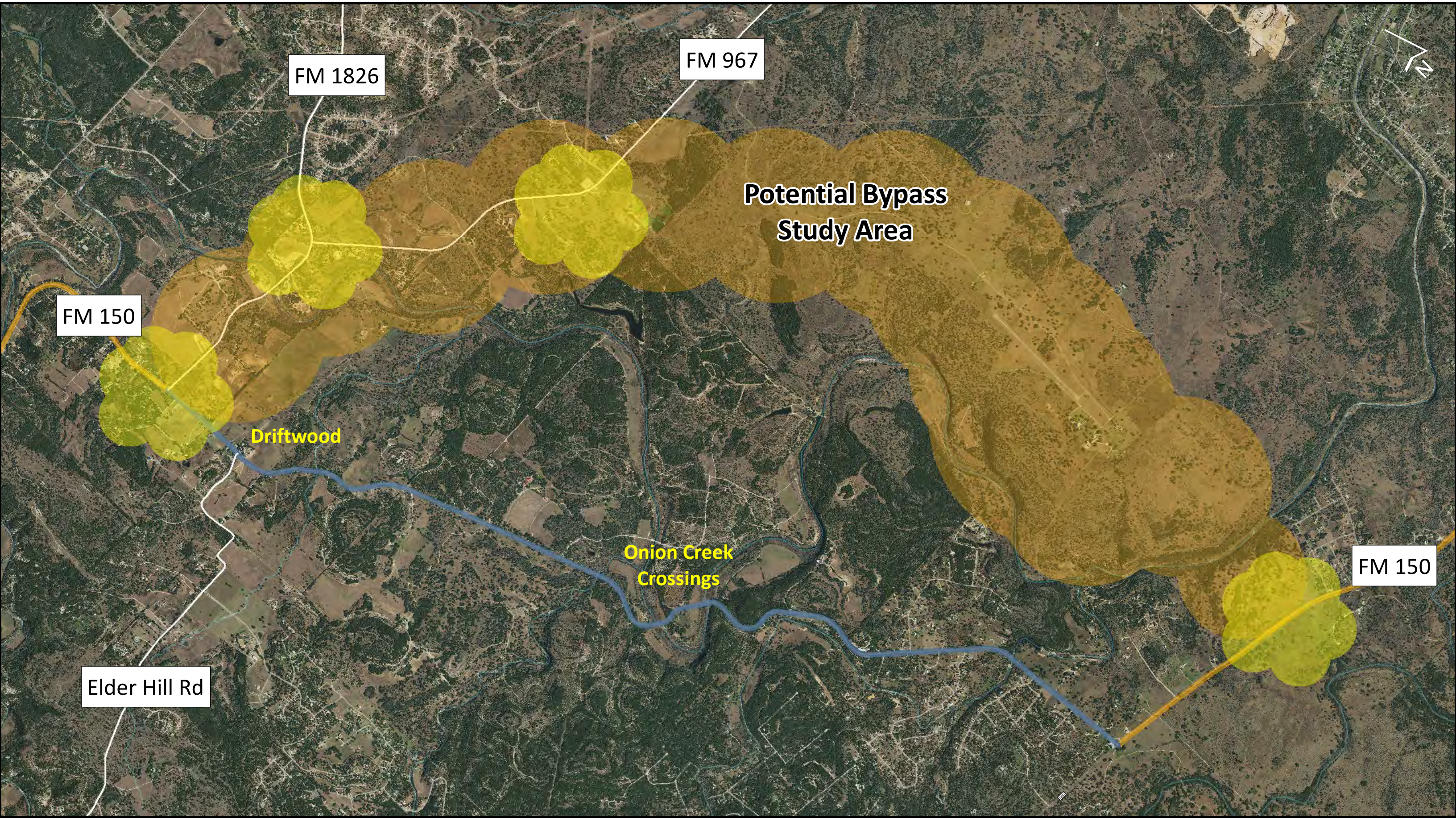
Name: _____

Email: _____

Address: _____

Phone Number: _____ Zip Code: _____

Potential Bypass



Bypass

➔ **Target speed:** what speed would you like to target on this segment?

Put dot by speed:

45 mph

50 mph

55 mph

Other?

➔ **Bicycle, pedestrian, equestrian accommodations:** are these a priority along the segment? If so, would you prefer to see a wider paved shoulder or separated path?



➔ **Cross-section:** what cross-sectional elements are you interested in?

Examples include curb, paved shoulders, gravel shoulders, landscaping

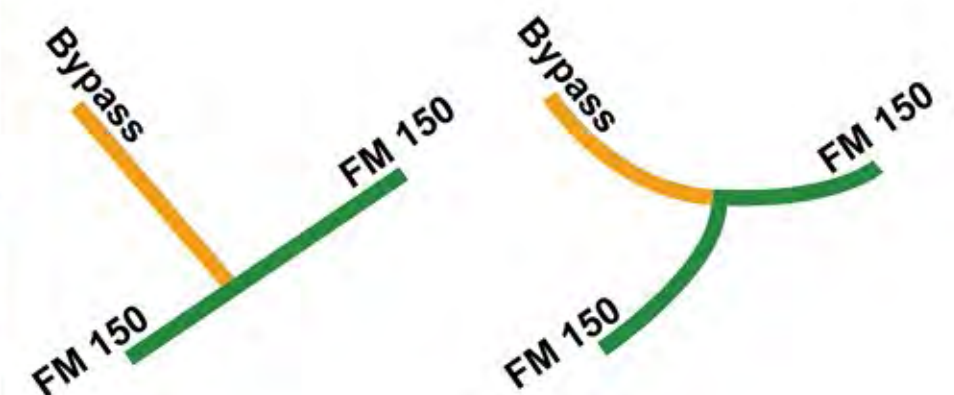
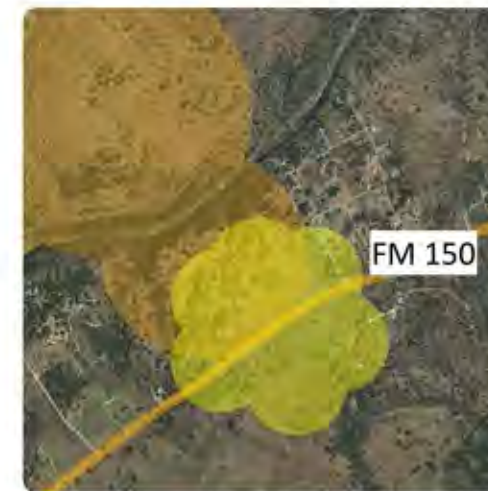
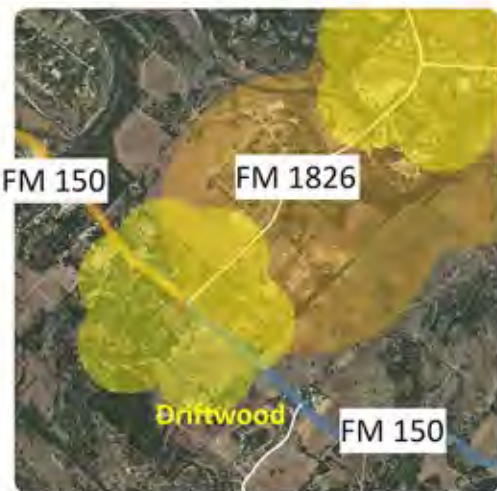
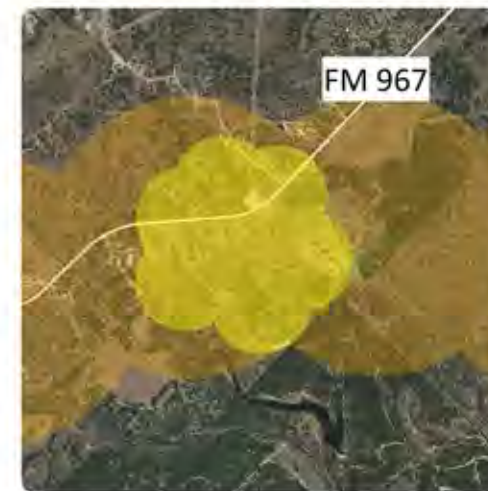
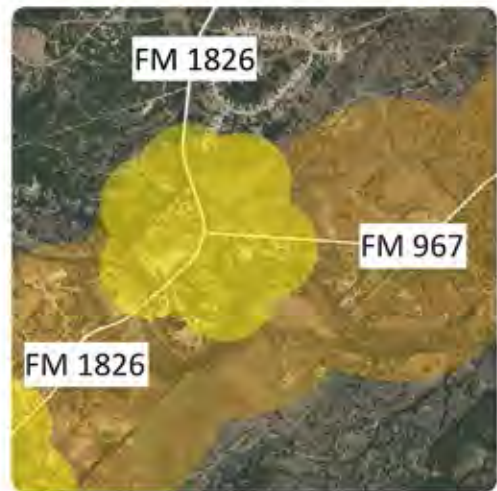


Bypass

- ➔ **Intersection form:** are you interested in stop control, traffic signals or roundabouts on the bypass?

The traffic control is also influenced by traffic volumes and national warrants.

- ➔ **Intersection Alignments:** do you want the roadway alignment at these intersections to direct drivers to use the bypass by altering the intersection alignment?



Bypass Station

Target Speed

What speed would you like to target on this segment? Circle one: 45 mph, 50 mph, 55 mph, Other _____

Comments

Bicycle, Pedestrian, and Equestrian Accommodations

Are these a priority along the segment? If so, would you prefer to see a paved wider shoulder or a separated path?

Comments

Cross-section

What cross-sectional elements are you interested in? (Examples include: curb, paved shoulders, gravel shoulders, landscaping)

Comments

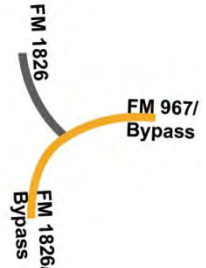
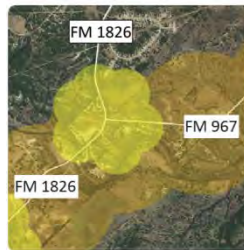
Bypass Station

Intersection of FM 1826 and FM 967/Bypass

Are you interested in stop control, a traffic signal, or roundabout?

Do you want the roadway alignment to direct drivers to use the bypass by altering the intersection alignment?

Comments

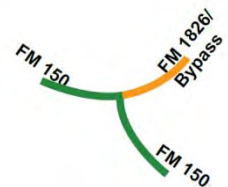
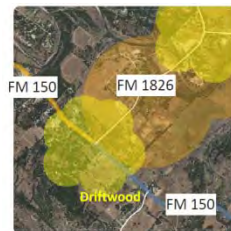


Intersection of FM 150 and FM 1826/Bypass

Are you interested in stop control, a traffic signal, or roundabout?

Do you want the roadway alignment to direct drivers to use the bypass by altering the intersection alignment?

Comments

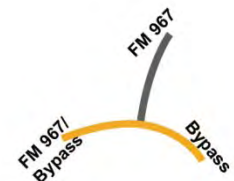
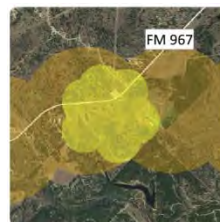


Intersection of FM 967 and Bypass

Are you interested in stop control, a traffic signal, or roundabout?

Do you want the roadway alignment to direct drivers to use the bypass by altering the intersection alignment?

Comments

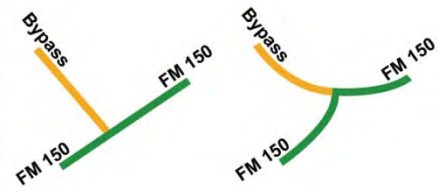
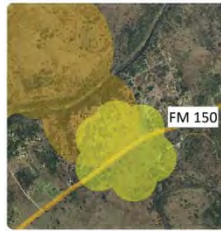


Bypass Station

Intersection of FM 150 and Bypass

Are you interested in stop control, a traffic signal, or roundabout?

Do you want the roadway alignment to direct drivers to use the bypass by altering the intersection alignment?



Comments

Optional:

Name: _____

Email: _____

Address: _____

Phone Number: _____ Zip Code: _____

FM 1826 to RR 12



12

150

1826

967

FM 1826 to RR 12

➔ **Target speed:** what speed would you like to target on this segment?
Put dot by speed:

45 mph

50 mph

55 mph

Other?

➔ **Delineation:** where might delineation be helpful to indicate curves in the roadway or intersections?



Source: FHWA

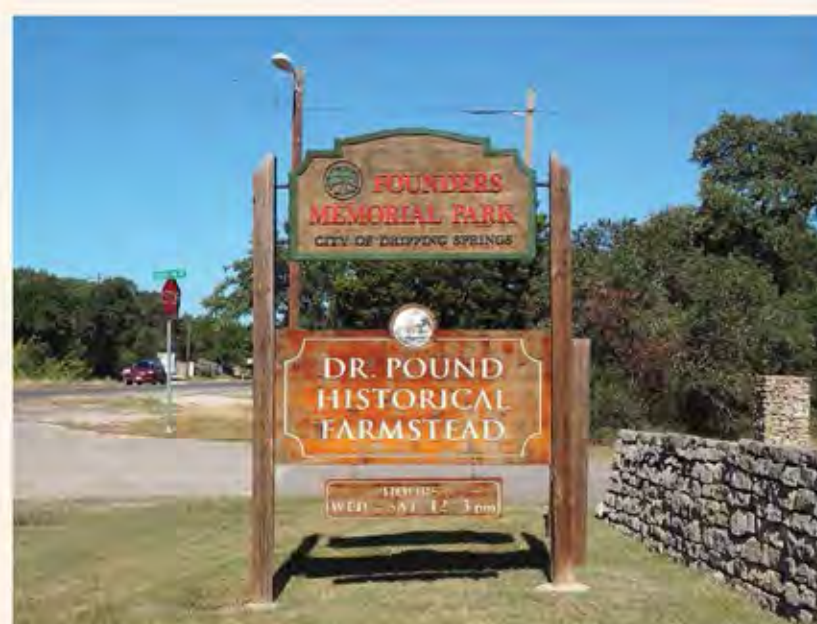


Source: FHWA

➔ **Bicycle, pedestrian, equestrian accommodations:** are these a priority along the segment? If so, would you prefer to see a wider paved shoulder or separated path?



➔ **Signage:** would you like to see historic, directional, or business signage? Where?



FM 1826 to RR 12

- ➔ **Darden Hill Rd Alignment:** are you interested in adjusting the alignment of Darden Hill Road to a straighter section of FM 150?
- ➔ **Intersection form:** are you interested in stop control, a traffic signal or roundabout?
The traffic control is also influenced by traffic volumes and national warrants.





Transition

Transition

Transition

RR 12

FM 150

FM 1826 to RR 12 - Intersection of RR 12

➔ **Target speed:** what speed would you like to target at the community zone?

Put dot by speed:

25 mph

30 mph

35 mph

45 mph

Other?

➔ **Gateway treatments:** what gateway treatments are you interested seeing?

Examples include signage, landscaping, change in cross-section to include median/curbing



➔ **Bicycle, pedestrian, equestrian accommodations:** are there desired crossing locations?

➔ **Signage:** would you like to see historic, directional, or business signage? Where?



FM 1826 to RR 12 - Intersection of RR 12

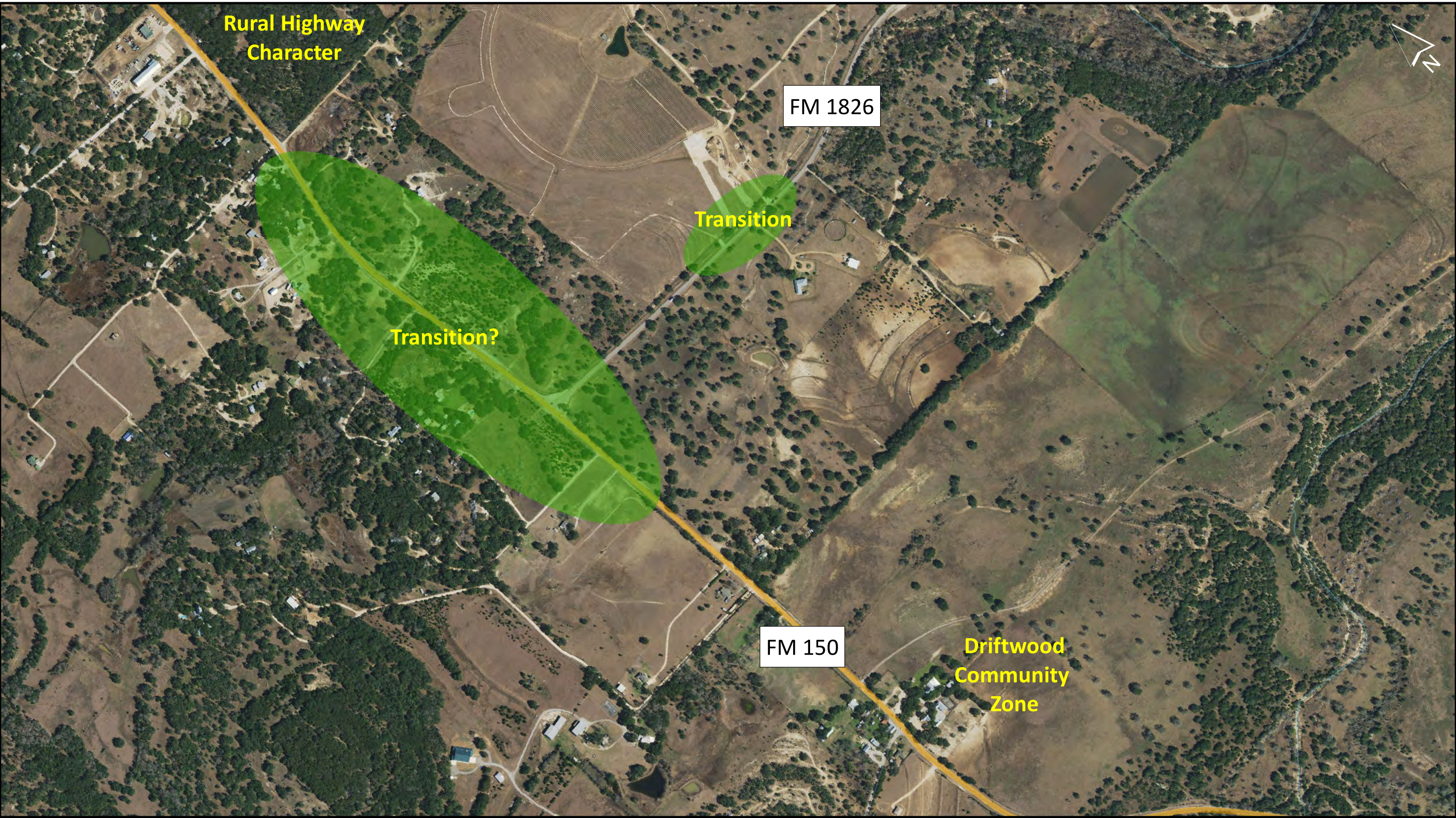
➔ **Intersection form:** are you interested in stop control, a traffic signal or roundabout?

The traffic control is also influenced by traffic volumes and national warrants.

Realigning the intersection would provide more space to accommodate an upgraded intersection.

A concept showing the potential realignment is provided below:





Rural Highway
Character

FM 1826

Transition

Transition?

FM 150

Driftwood
Community
Zone

FM 1826 to RR 12 - Intersection of FM 1826

➔ **Target speed:** what speed would you like to target at the intersection of FM 1826?

Put dot by speed:

25 mph

30 mph

35 mph

45 mph

Other?

➔ **Target speed:** what speed would you like to target approaching Driftwood?

Put dot by speed:

25 mph

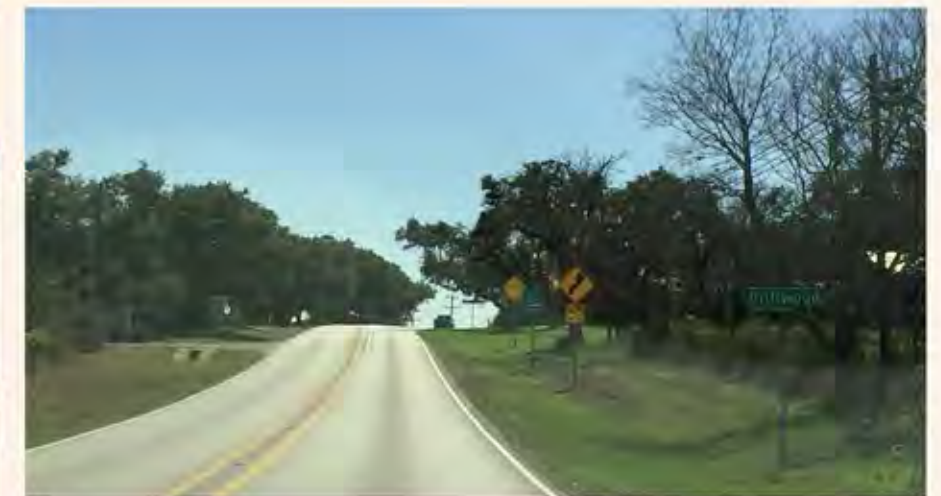
30 mph

35 mph

45 mph

Other?

➔ **Driftwood Community Zone:** where do you feel the Driftwood Community Zone starts?
Should the transition occur north or south of 1826?



FM 1826 to RR 12 - Intersection of FM 1826

- ➔ **Intersection form:** are you interested in stop control, a traffic signal or roundabout?

The traffic control is also influenced by traffic volumes and national warrants.

- ➔ **Gateway treatments:** what gateway treatments are you interested seeing?

Examples include signage, landscaping, change in cross-section to include median/curbing



- ➔ **Bicycle, pedestrian, equestrian accommodations:** are there desired crossing locations?

- ➔ **Signage:** would you like to see historic, directional, or business signage? Where?



FM 1826 to RR 12

Target Speed

What speed would you like to target on this segment? Circle one: 45 mph, 50 mph, 55 mph, Other _____

Comments

Delineation

Where might delineation be helpful to indicate curves in the roadway or intersections?

Comments

Bicycle, Pedestrian, and Equestrian Accommodations

Are these a priority along the segment? If so, would you prefer to see a wider paved shoulder or a separated path?

Comments

Signage

Would you like to see historical, directional, or business signage? Where?

Comments

FM 1826 to RR 12 Station

Darden Hill Road Alignment

Are you interested in adjusting the alignment of Darden Hill Road to a straighter section of FM 150?

Comments

Intersection of Darden Hill Road and FM 150

Are you interested in stop control, a traffic signal, or roundabout?

Comments



Potential Intersection Alignment

FM 1826 to RR 12 Station

Intersection of FM 1826

Target Speed – Intersection of FM 1826

What speed would you like to target at the intersection of FM 1826? Circle one: 25 mph, 30 mph, 35 mph, 45mph, Other_____

Target Speed – Approaching Driftwood

What speed would you like to target approaching Driftwood? Circle one: 25 mph, 30 mph, 35 mph, 45 mph, Other_____

Driftwood Community Zone

Where do you feel the Driftwood Community Zone starts? Should the transition occur north or south of 1826?

Comments

Intersection of FM 1826

Are you interested in stop control, a traffic signal, or roundabout?

Comments

Gateway Treatments

What gateway treatments are you interested in seeing? (Examples include: signage, landscaping, change in cross-section to include median/curbing)

Comments

FM 1826 to RR 12 Station

Bicycle, Pedestrian, and Equestrian Accommodations

Are there desired crossing locations?

Comments

Signage

Would you like to see historical, directional, or business signage? Where?

Comments

FM 1826 to RR 12 Station

Intersection of RR 12

Target Speed – Intersection of RR 12

What speed would you like to target on this segment? Circle one: 25 mph, 30 mph, 35 mph, 45 mph, Other _____

Gateway Treatments

What gateway treatments are you interested in seeing? (Examples include: signage, landscaping, change in cross-section to include median/curbing)

Comments

Bicycle, Pedestrian, and Equestrian Accommodations

Are there desired crossing locations?

Comments

Signage

Would you like to see historical, directional, or business signage? Where?

Comments

Intersection of RR 12

Are you interested in stop control, a traffic signal, or roundabout?

Comments

FM 1826 to RR 12 Station

Optional:

Name: _____

Email: _____

Address: _____

Phone Number: _____ Zip Code: _____